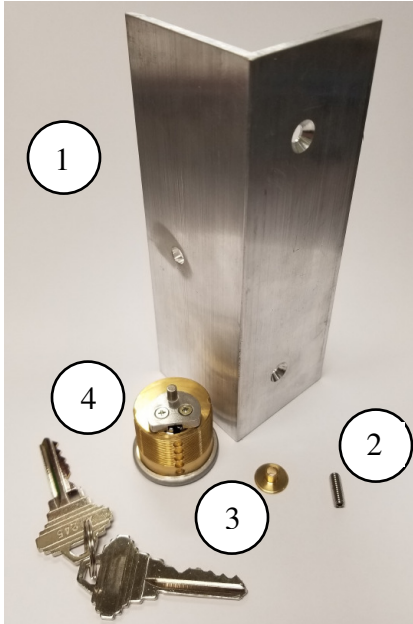


**Installer Note: Damage or fabrication mistakes made to the product, during the field installation of the Archetype Narrow key cylinder, is the responsibility of the installer.**

### 1. Parts List and Recommended Tools



Parts List:	ID #	Color	Key Alike/Different
1)Key Cylinder Template	25209	n/a	n/a
2)Set Screw	included	n/a	n/a
3)Bushing	included	n/a	n/a
3)Keyed Cylinder	25423	Black	Keyed Alike
3)Keyed Cylinder	25421	Brushed SS	Keyed Alike
3)Keyed Cylinder	25424	Black	Keyed Different
3)Keyed Cylinder	25423	Black	Keyed Alike
3)Keyed Cylinder	25424	Black	Keyed Different
3)Keyed Cylinder	25427	Silver Powder Coat	Keyed Alike

#### Recommended Tools:

- 1) Allen Wrenches 5/64 & 3/32
- 2) 1-3/16" Bimetal Hole Saw
- 3) Round File
- 4) 1/4" Drill Bit
- 5) Drill
- 6) Measuring Tape

### 2. Remove primary latch cover plate (Lead Stile Shown).



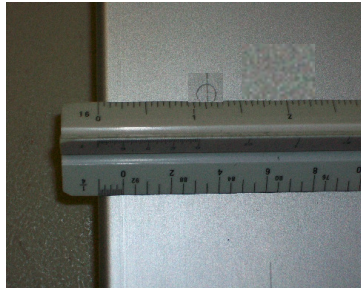
### 3. Attach key cylinder template using one of the cover screws (Caution, do not scratch extrusion).



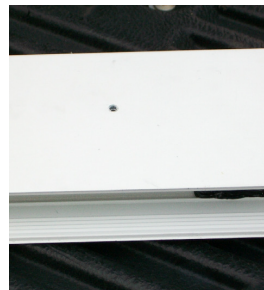
4. Use a pencil to mark the center of the key cylinder hole location then remove template.



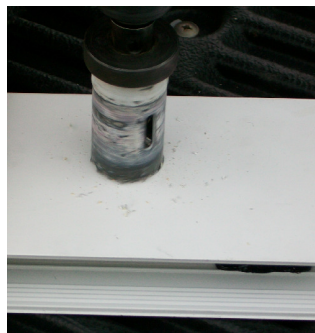
5. Verify hole location (1.144 from edge of the lead stile to center of the hole).



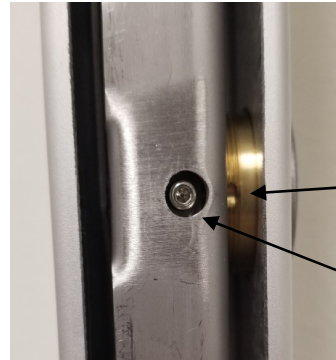
6. Drill a pilot hole (approximately 1/4") to provide guide for bimetal hole saw.



7. Cut 1-3/16" diameter hole with a bimetal hole saw. Note: (Wood hole saws should not be used!). Use a file as necessary to clean up any burrs around the hole. Use compressed air to remove aluminum chips from lead stile and Archetype Narrow latch.



8. Install key cylinder by rotating clockwise until flush with Lead Stile. Then rotate key cylinder counterclockwise until the key slot is at the bottom and the groove in key cylinder is aligned with the setscrew. Turn setscrew clockwise until it is tight against the key cylinder. The setscrew prevents rotation of the key cylinder.



Groove in  
Key Cylinder

Setscrew

9. Check operation of key cylinder.



10. Reinstall primary latch cover plate (Lead Stile Shown).

