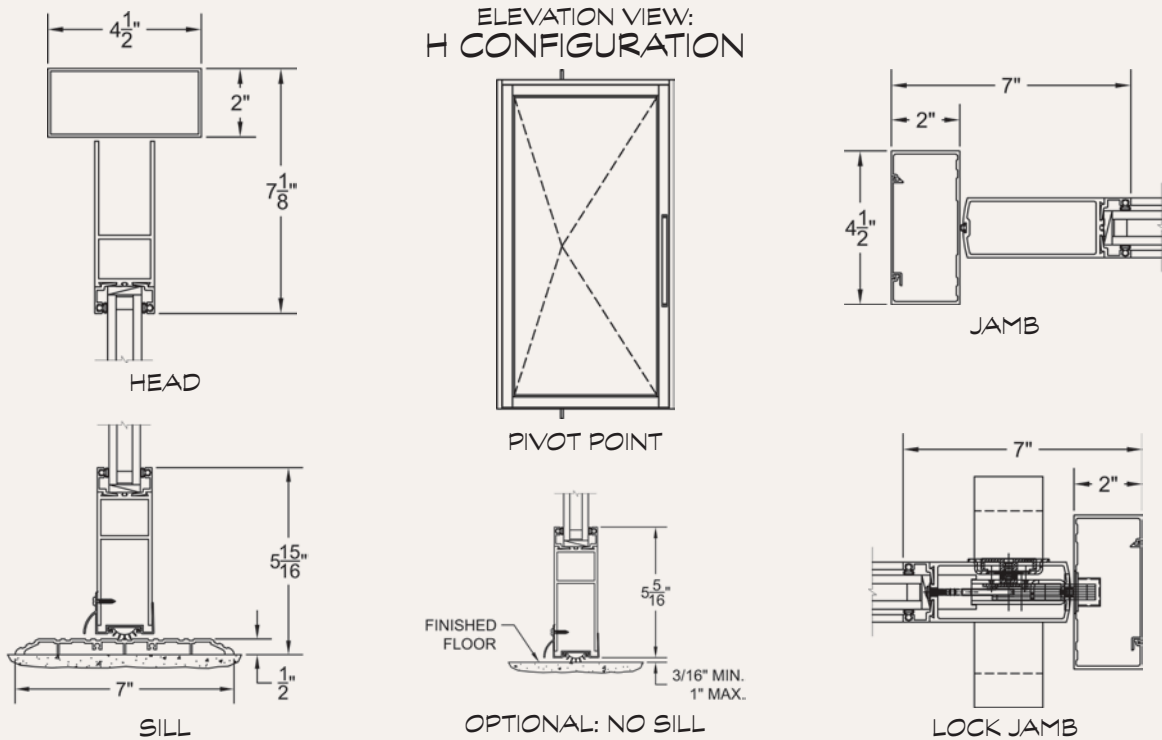


SERIES 3400P LUXURY HOME PIVOT DOOR



Photo by ©Ciro Coelho/CiroCoelho.com | Shot at MarSolMalibu.com

TYPICAL CONFIGURATIONS	← MAX PANEL WIDTH	↑ MAX PANEL HEIGHT	☀ SHGC	❄ U-FACTOR
• H, HH, HHH.	'10'	'15'	Unavailable	Unavailable



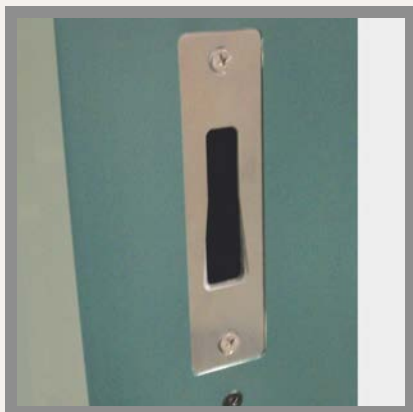
*Max width and height are not necessarily available in combination.





DESIGN NOTES

- Dramatic operation.
- Massive single panels.
- Flush sill (no weather performance).



Factory Quality:

There are many imitators in the market, but only Fleetwood offers an aluminum frame pivot door with the high expectations of factory-controlled quality. For example, the strike plate is a custom design and is mortised into the jamb. Additionally, each frame and vent corner are carefully constructed with tight factory tolerances.



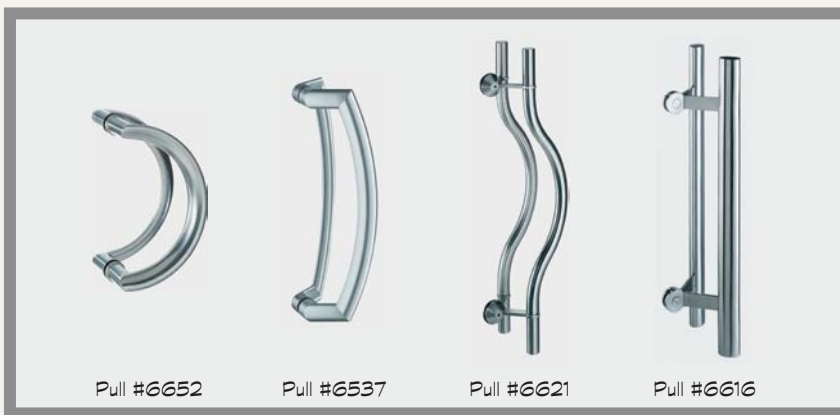
Patented Hardware:

The latching system on the Series 3400P is the same exceptional system as our premium sliding door systems. The Archetype is crafted with #316 marine grade stainless steel and is finished with an electro-polish process for ultimate corrosion resistance. We offer a variety of stainless steel pulls, or you may elect to install your own custom pull.



Closer Choices:

The Series 3400P offers three different closer options: no closer (pivots only), a floor closer, or a head closer. Depending on the panel weight, customers may choose the location of the closer/pivot. Floor closers are located beneath the floor whereas the head closer fits inside our 2" header. For an indoor/outdoor feel, some customers opt for a "no threshold" option.



Pull Choices:

The Series 3400P, as well as all of our multi-slide doors, offers a wide selection of contemporary and elegant pulls by FSB. From the online product page, you can choose from a variety of sizes, shapes and finishes. Four of these pulls are pictured here to demonstrate the diversity of the pull offerings.