

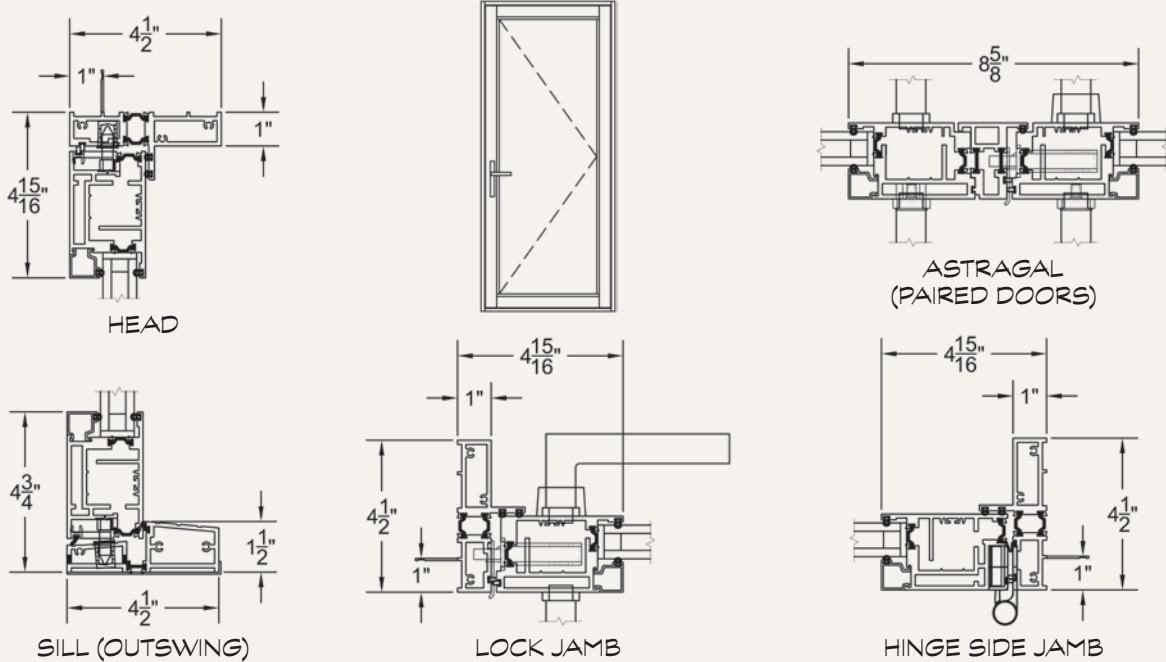
SERIES 3200-T

NARROW STYLE "THERMAL FRAME" HINGED DOOR



TYPICAL CONFIGURATIONS	← MAX PANEL WIDTH	↑ MAX PANEL HEIGHT	☀ EXAMPLE SHGC	❄ EXAMPLE U-FACTOR
• H, HH, OH, OOH, OHO.	40"	108"	² NFRC: 0.22 ³ S.P.A.: 0.25	² NFRC: 0.39 ³ S.P.A.: 0.31

ELEVATION VIEW:
H CONFIGURATION



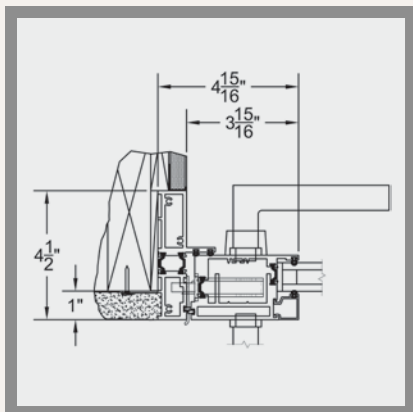
²Specimen size: Nom. 38" x 82".
³Simulated Performance Alternative size: 72" x 108" HH using SN68/Argon/Clear/Argon/SN68 triple glazing.





DESIGN NOTES

- Narrow 3-15/16" jamb profile (see Slender Lines, below).
- Adjustable hinges.



Slender Lines:

The Series 3200-T boasts a jamb profile of only 4-15/16". Even better, the jamb was designed for finished walls to bury another 1", leaving a wall-to-glass profile of only 3-15/16" on the handle side and 4-1/16" on the hinge side.



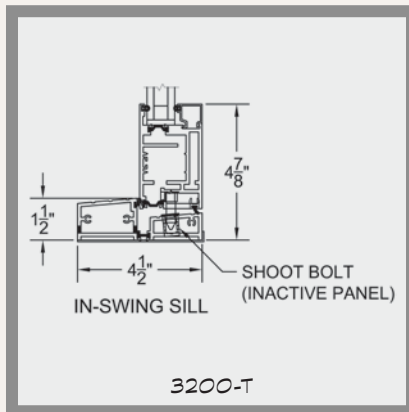
Minimalist Hardware:

The hardware selected for the 3200-T is manufactured in Germany by FSB. The handle plate is a slimmer version of the Series 3900-T plate but uses the same stainless lever so mixing both products is more feasible. The door self latches when closed and is secured with a dead bolt.



Flush Mounted Adjustable Hinges:

Each vent is provided with four adjustable hinges that are mortised into the extrusions (see the cross section on page 19). The top and bottom hinges provide horizontal movement and the two center hinges allow for vertical adjusting.



Inswing Water Performance:

The Series 3200-T offers an inswing option that provides a modicum of water protection. Notice the sill design includes a slope that guides water to the trough.