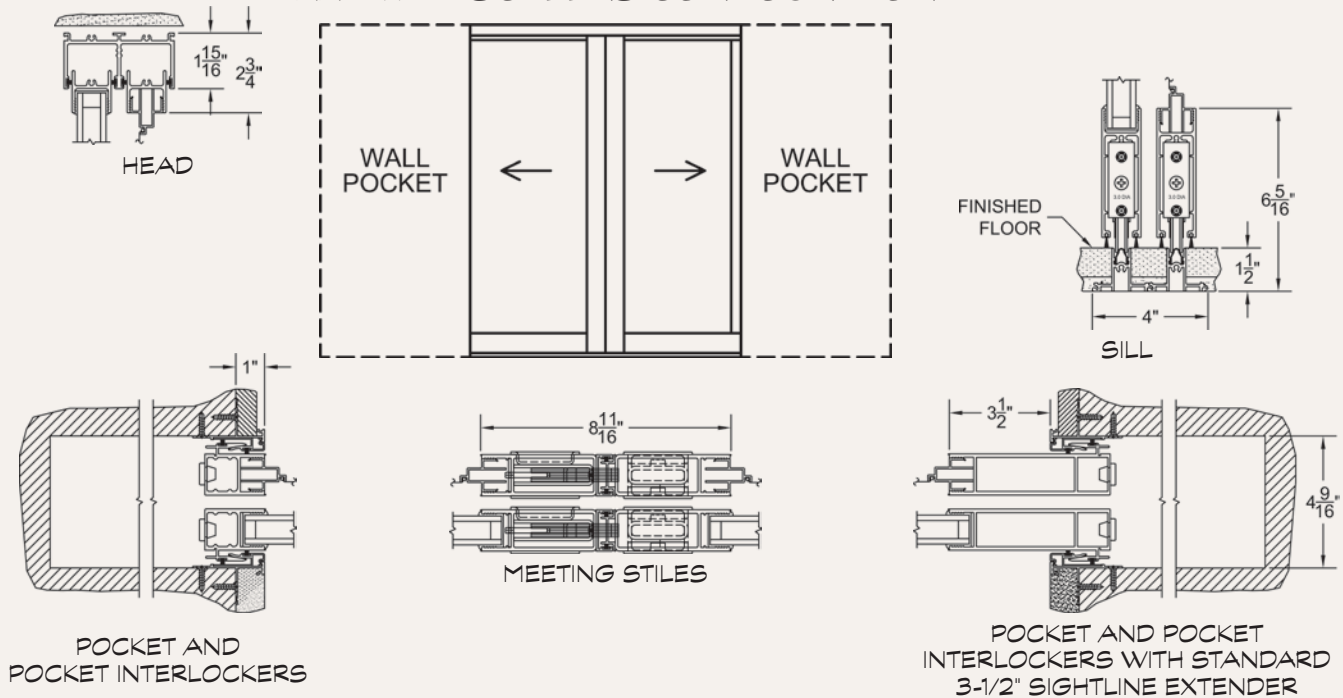


SERIES 3050 MULTI-SLIDE & POCKET DOOR



CONFIGURATIONS	← MAX PANEL WIDTH	↑ MAX PANEL HEIGHT	☀ EXAMPLE SHGC	❄ EXAMPLE U-FACTOR
<ul style="list-style-type: none"> Virtually Unlimited Multi-Slide, Curved, Pocket, and Corner applications. 	10'	18'	² NFRC: 0.21 ³ S.P.A.: 0.22	² NFRC: 0.46 ³ S.P.A.: 0.39

ELEVATION VIEW: PXXP WITH SCREENS CONFIGURATION



¹Max width and height are not necessarily available in combination.

²Specimen size: Nom. 79" x 79".

³Simulated Performance Alternative size: 10' x 12' PXXP using SNX62-IS20/Argon Warm Edge glass.





DESIGN NOTES

- Barefoot sill (not weather rated).
- Promotes indoor/outdoor living.
- Complements the weather rated 3070.



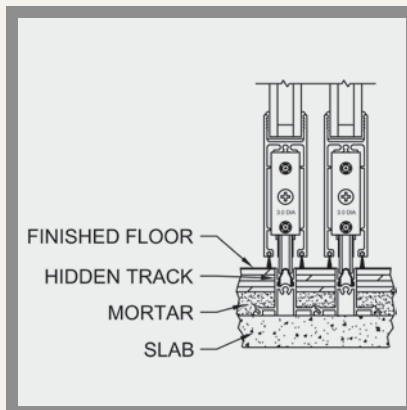
Curved/Bent: Hidden Track

The aluminum and glass can be bent to your precise specifications (12'+ radius) and the number of panels is unlimited. (For weather or energy performance, the Series 3070 is offered bent too.) The image above shows the track before the finished flooring is installed and the image below shows post installation.



Hidden Track System:

The track system of the Series 3050 is unique in several aspects, chief of which is the seamless transition from inside to outside. Additionally, the Hidden Track is available in two heights (1-1/2" or 1") to accommodate most floors. Because the Hidden Track utilizes the same stainless insert as all Fleetwood sliding doors, replacement is easy and does not require demolition to the finished flooring.



Seamless Transition:

The "Hidden Track" creates an almost seamless transition of the exterior to the interior of the room.



Optional 1/2" Threshold:

The Series 3050 is available with an optional threshold of 1/2". Regardless of which threshold is selected, the Series 3050 has a minimal starting force and operating force (less than 5 lbs. on a 300 lbs. panel).